

BURBANK TO LOS ANGELES PROJECT SECTION

August 2020



CONNECTING CALIFORNIA

CALIFORNIA HIGH-SPEED RAIL

Phase I:

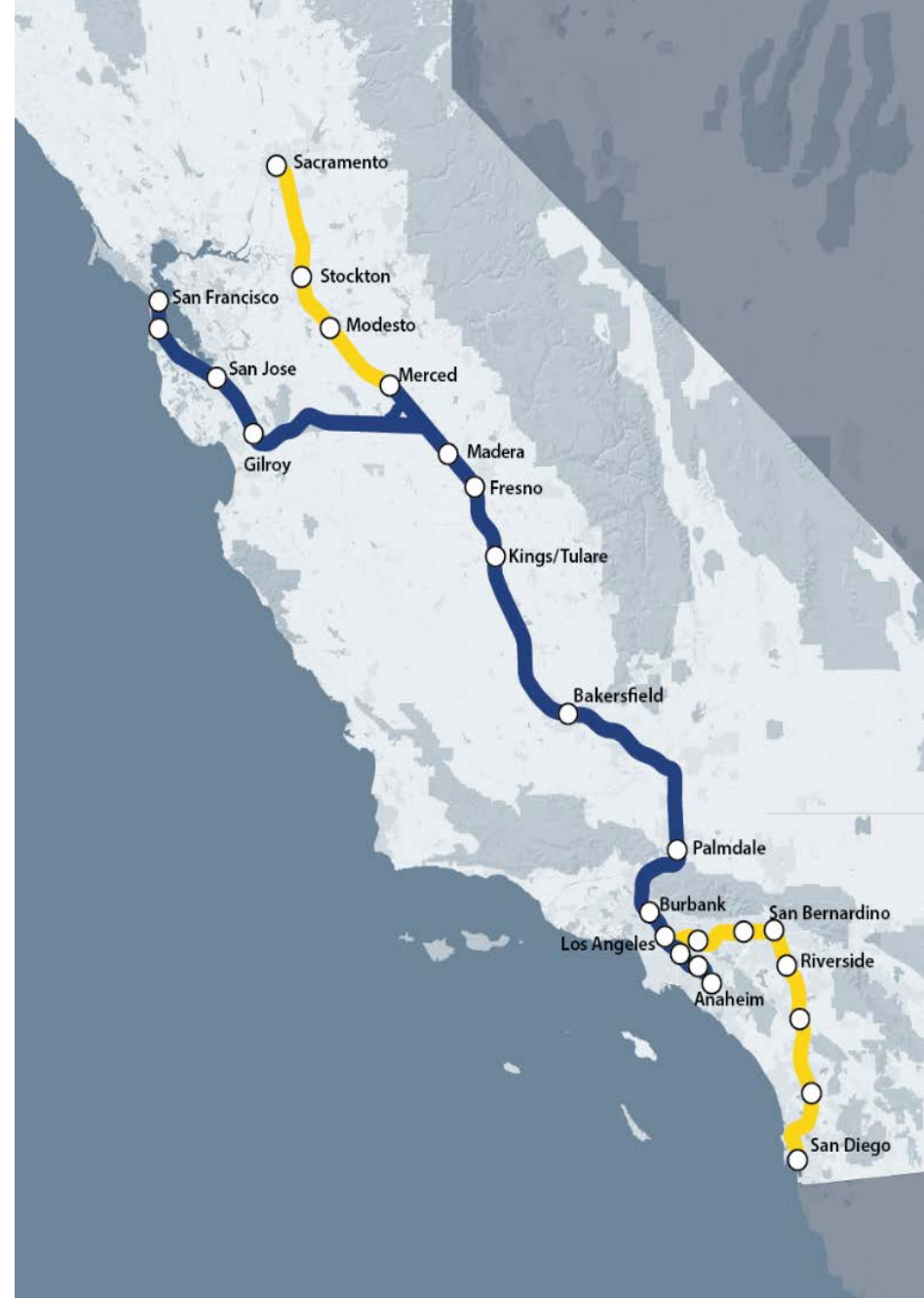
- » 520 Miles
- » San Francisco to Los Angeles/Anaheim
- » 119 miles under construction

Phase II:

- » Extends 300 Miles
- » Connections to Sacramento and San Diego

At approximately **200 mph**

Up to **24 Stations**



BURBANK TO LOS ANGELES PROJECT SECTION

CALIFORNIA HIGH-SPEED RAIL

Approximately 14 miles

- Electrified HSR tracks will run in the existing rail corridor

Two Stations

- Burbank Airport Station below-ground
- Los Angeles Union Station

Two Alternatives Under Study

- Project Alternative
- No Project Alternative

Benefits

- Improve operational characteristics for passenger and freight services
- Improve safety
- Reduce emissions and congestion



CONNECTING CALIFORNIA

CALIFORNIA HIGH-SPEED RAIL

Shared Corridor Features

Positive Train Control

- Restricts train speeds and serves as fail-safe system
- Takes over system preventing running red signals

Corridor Protection/Detection

- Fencing
- Walls
- Sound Barriers

Grade Separations

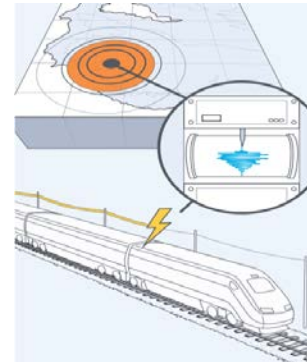
- Take vehicles, bicycles and pedestrians over or under active railroad tracks to prevent accidents and free up traffic flow

Early Earthquake Warning System

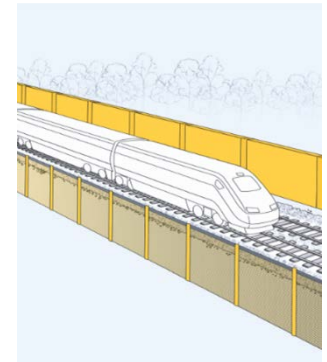
- Detects initial seismic wave
- Immediately cuts off power to trains

Planning Around Stations

- Working with cities on Transit-Oriented Development (TOD)



Early Earthquake Warning



Corridor Protection



Soundwall Concept



BURBANK TO LOS ANGELES PROJECT SECTION

CALIFORNIA HIGH-SPEED RAIL

Los Angeles

- Alignment crosses LA River near SR-110
- Designs are sensitive to Rio de Los Angeles State Park, Los Angeles State Historic Park and Albion Riverside Park
- Coordination with LA River Path, Taylor Yard River Park & Metro's Link US Project
- Metro's Link US project is designed to increase capacity for rail service at LA Union Station while reducing train idling times. It will also accommodate future high-speed rail service and expand the station's capacity.



BURBANK TO LOS ANGELES ENVIRONMENTAL

CALIFORNIA HIGH-SPEED RAIL

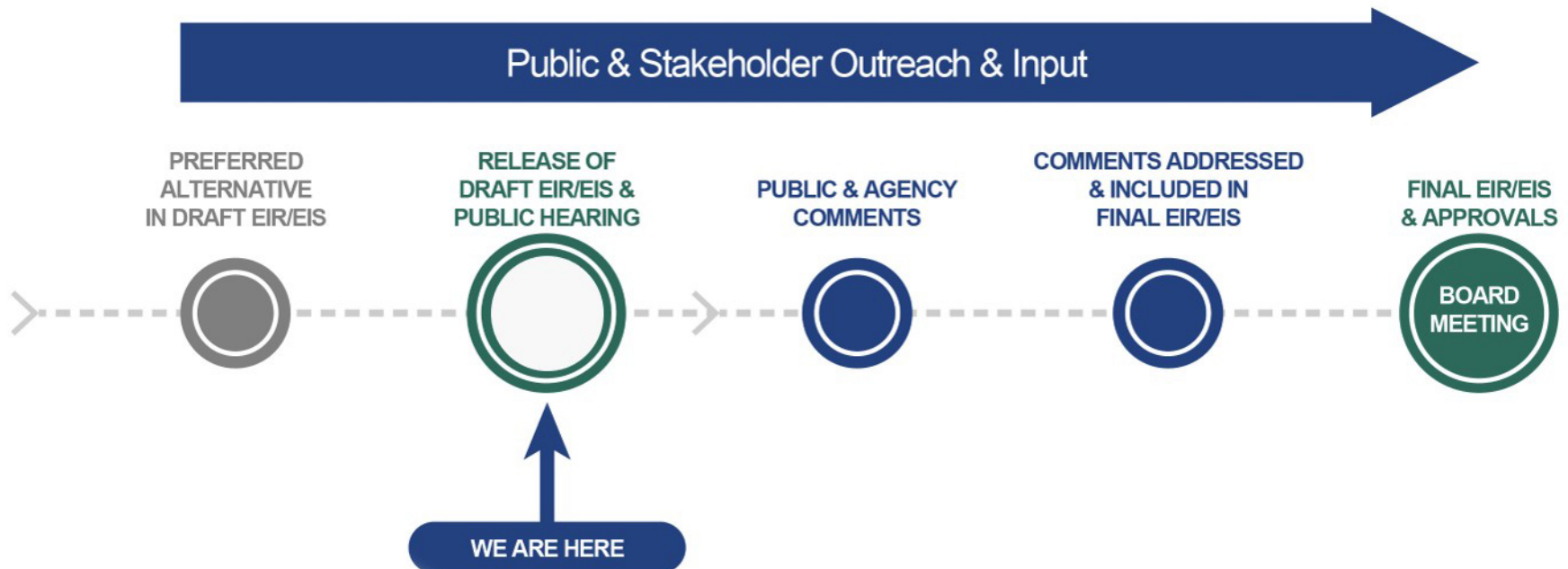
Process for Defining Full Phase 1 Route

Background

- 2014: Project Section scoping
- 2009-2016: Alternatives Analysis
- 2018: Preferred Alternative presented to Authority Board; analyzed in Draft EIR/EIS

Current Status

- 2020: Release of Draft EIR/EIS



BURBANK TO LOS ANGELES ENVIRONMENTAL

CALIFORNIA HIGH-SPEED RAIL

Environmental Documents Analyze These Topics

- Aesthetics & Visual Quality
- Air Quality & Global Climate Change
- Biological Resources & Wetlands
- Capital & Operating Costs
- Cultural Resources
- Cumulative Impacts
- Electromagnetic Interference/Fields (EMI/EMF)
- Environmental Justice
- Geology, Soils, Seismicity & Paleontology
- Hazardous Materials & Wastes
- Hydrology & Water Resources
- Noise & Vibration
- Parks, Recreation & Open Space
- Public Utilities & Energy
- Regional Growth
- Safety & Security
- Station Planning, Land Use & Development
- Section 4(f) & Section 6(f) Evaluations
- Socioeconomics & Communities
- Train Operations
- Transportation



BURBANK TO LOS ANGELES ENVIRONMENTAL

CALIFORNIA HIGH-SPEED RAIL

Environmental Document Release

Draft EIR/EIS Released May 29, 2020

- Document provides an opportunity to comment
- Virtual open house meeting was held on June 18, 2020
- Virtual public hearing was held on July 8, 2020
- ~~45-day review and comment period (May 29 - July 16, 2020)~~ **91-day comment period (extended to August 31, 2020)**
- Draft EIR/EIS is available at www.hsr.ca.gov
- Materials, including information stations and videos, will be available until the close of the public comment period at: www.meethrsocal.com

Upcoming Outreach Activities

- Telephone Town Hall – Wednesday, August 19 6-7:00pm
- Additional Office Hours:

August 14 from 10 a.m. - 12 p.m.

August 20 from 12 - 2 p.m.

August 18 from 2:30 - 4:30 p.m.

August 24 from 10:30 a.m. to 12:30 p.m.

Notification

- A postal mail and email notification were sent out around the release of the Draft EIR/EIS
- Additional notification was issued for second Telephone Town Hall and Comment Period extension



BURBANK TO LOS ANGELES ENVIRONMENTAL

CALIFORNIA HIGH-SPEED RAIL

Opportunities to submit public comments on the Draft EIR/EIS

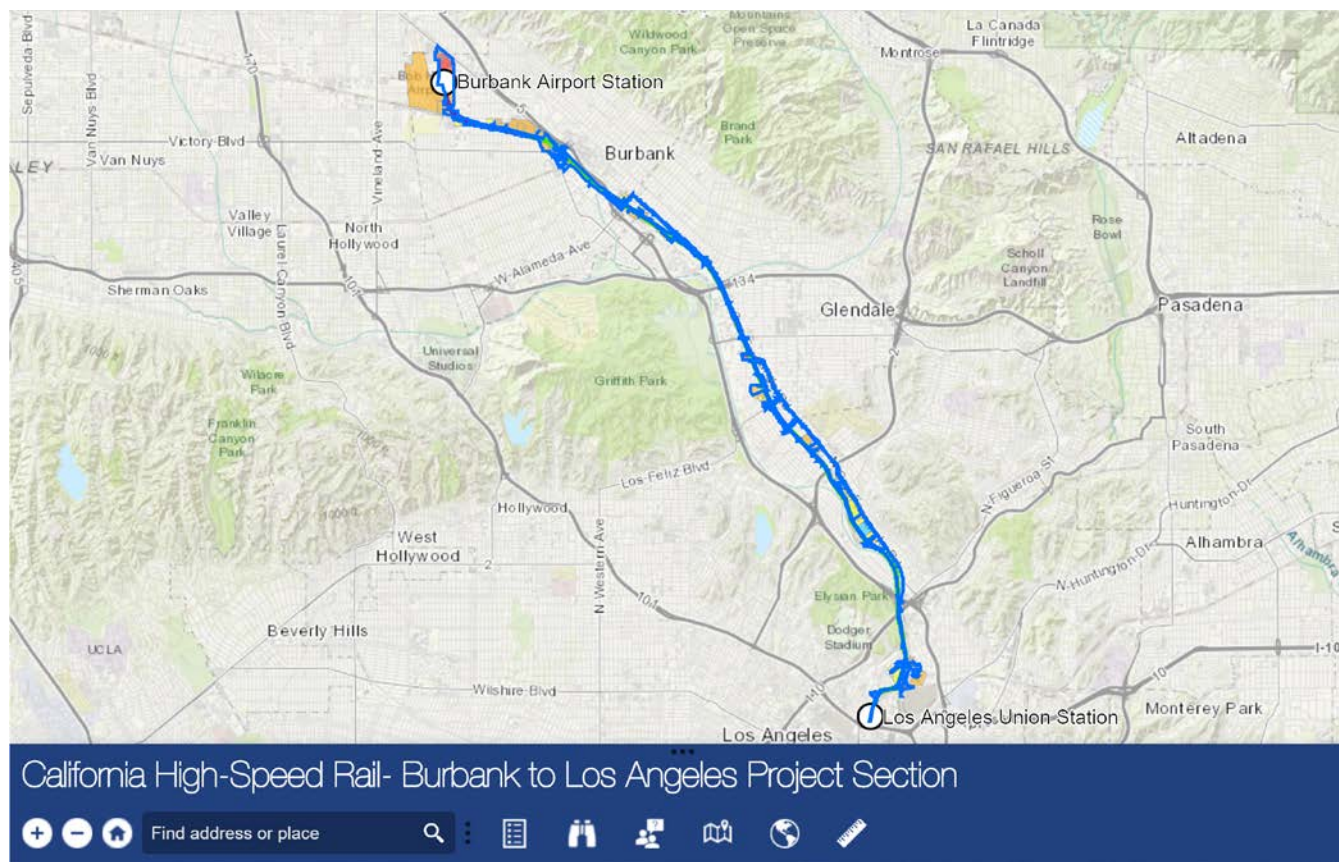
- **By mail:** Attn: Burbank to Los Angeles Draft EIR/EIS Comment, 355 S Grand Ave, Suite 2050, Los Angeles, CA 90071
- **Through the Authority's website** (www.hsr.ca.gov)
- **By email** to Burbank_Los.Angeles@hsr.ca.gov with the subject line "Draft EIR/EIS Comment".
- **Verbal comment on the telephone hotline** for the project section at (877) 977-1660.
- **Oral testimony** at the virtual public hearing to be held on July 8, 2020 from 3:00-8:00 p.m.
(Completed)



BURBANK TO LOS ANGELES ENVIRONMENTAL CALIFORNIA HIGH-SPEED RAIL

Property Impacts

The Authority understands that stakeholders may be concerned about potential impacts to their property and has developed an interactive map on the project website to provide more information



ENVIRONMENTAL NEXT STEPS

CALIFORNIA HIGH-SPEED RAIL

Final Environmental Document Process

After conclusion of the public comment period, the Authority will:

- Prepare responses to comments
- Revise the environmental document as needed and include responses to comments
- Release the Final EIR/EIS
- Consider approval of the project and issue a Record of Decision (NEPA) and Notice of Determination (CEQA)



STAY INVOLVED

CALIFORNIA HIGH-SPEED RAIL

Burbank to Los Angeles Project Section

(877) 977-1660

Burbank_LosAngeles@hsr.ca.gov

www.meethsrsocal.org

Southern California Regional Office

California High-Speed Rail Authority

355 S. Grand Avenue, Suite 2050

Los Angeles, CA 90071

www.hsr.ca.gov



@cahsra



facebook.com/CaliforniaHighSpeedRail



@cahsra



youtube.com/CAHighSpeedRail

